

VersaCAD



Versatile Computer Aided Design

VOLUME 11, NUMBER 4

FALL 10

Archway Systems, Inc.

Southern California:
2134 Main St, Ste. 160
Huntington Beach, CA 92648

Phone: 714-374-0440
Fax: 714-374-0301
tom@archwaysystems.com

Northern California:
56 Nicholl Ave
Point Richmond, CA 94801
510-231-0502
gmcmeans@egs-inc.com

WWW.ARCHWAYSYSTEMS.COM

WWW.VERSACAD.COM

Inside this issue:

Who's Who at Archway Systems	2
Report: VersaCAD 2011 Upcoming Release	2
Archway Meets Governor Schwarzenegger	3
3D Printer Specials	3
MyCADvideos.com	3

Have we forgotten the purpose of VersaCAD?

It's hard for many of us to recall how we did design/drafting before CAD. For some, they don't know that there was such a thing as a drafting board. As a reminder, the purpose of CAD was, and still is, to increase productivity in producing design drawings, still the most popular media used for communicating designs. 3D and words like BIM are very popular, but when push comes to shove, the construction crew, fabricator, erector, facility manager, or shop are all looking for good ol' drawings.

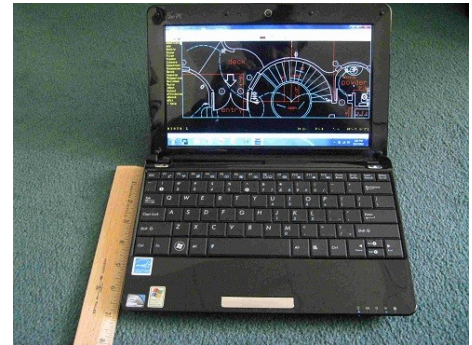
So until all designs are communicated with 3D models, which will be never because some designs cannot be 3D computer models, productivity in producing drawings, such as maps and part layouts, is still very important.

VersaCAD has always been a workhorse used by many for productive preparation of drawings. In fact, it may be argued that VersaCAD is the most productive of all the CAD for producing drawings. How can we defend that? Well, take a simple 100 sq. ft. floor plan. Lay it out using VersaCAD's dynamic coordinate dial. Drag and drop windows and doors from 700 symbols. Then, compare that to laying it out with any other CAD. Count the keystrokes. The lowest number of keystrokes is the most productive CAD. Or, start from scratch and see how long the CAD software takes after you double click a file. On my 4 year old laptop, an 8000 object (2000 symbols) drawing opens in 4 seconds.

Also, keep in mind the 80-20 rule. VersaCAD has more than 80% of the functionality for less than 20% of the price. In fact for 80% of projects, VersaCAD has 100% of the functions actually needed and used. Top that off with the fact that VersaCAD has the most responsive, personalized support, and is 100% coded and supported in America, it gets pretty clear that VersaCAD is more than just a viable candidate for CAD. It will simply make more money for the designer.

VersaCAD for Netbooks

VersaCAD is great for running or viewing CAD files on a Netbook.



Shown here is VersaCAD for Windows 2010 running on an Eee PC which is a 2lb. 13 oz. Netbook measuring about 6"x10".

Wikipedia defines a Netbook as: a branch of subnotebooks, a rapidly evolving category of small, lightweight, and inexpensive laptop computers suited for general computing and accessing Web-based applications; they are often marketed as "companion devices."

What makes VersaCAD special is its small footprint, very tight code, plus the translator that can communicate with most any other CAD via DXF, DWG, or IGES formats. VersaCAD launches in under 2 seconds (compared with nearly a minute for some heavy CAD), but can handle files as large as 3 million objects (elements or entities). Zoom and pan are fast, and VersaCAD can print to scale on any operating system compatible printer. It also works nicely with SketchUp/OpenStudio/Energy +, making it a great way to collect proposed or existing floor plan data.

Several VersaCAD users have bragged about the usability of VersaCAD on Netbooks for their whole staff. Since VersaCAD offers unlimited site licenses for as low as \$1k for small companies up to only \$5k for the largest of companies, the cost can be driven as low as \$50 per computer. Add the cost of the Netbook (the one shown cost \$350) and you have a fantastic way to distribute drawings among reviewers, managers, fabricators, erectors, machine tool operators, facility engineers, and others.

Who's Who at Archway Systems

Tom Lazear	Administration, Sales & Training	Josh Lazear	Webmaster , Z Support and Programming
George McMeans	Sales & Training in Nor. Cal.	Daniel Lazear	Programming
Mike Lazear	Programming & Support	Stephen Peters	Application Engineer
Phill Frye	Training & Consulting	Chris Grubb	Civil Engineering Software
Greg Hamano	Training & Support	Lauren Jansen	Marketing & Sales
Sandy Lazear	Accounting	Shannon Schoenberger	Marketing
Linda Grubb	Support and administration		

REPORT

VersaCAD 2011 Upcoming Release

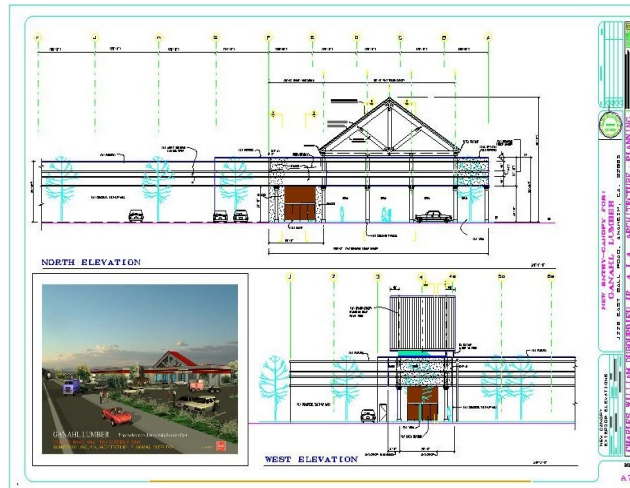
There are some major new features that have been added to the upcoming VersaCAD 2011 release. For example, VersaCAD now has the ability to insert an image into a VersaCAD drawing, the ability to insert a filled polygon or other object with a constant color, enhanced output to enable printing images and filled polygons, and automatic setup of printer specs for best quality.

Raster files are now added as objects, not as X-ref which gives you all the flexibility of references files, but with added speed and simplicity. Images are inserted into a drawing in the same way as other objects, making it just as easy for those who are already using VersaCAD. There is no learning curve for existing users or procedures to learn as the new commands fit into the existing way users work. The images can be fully or partially transparent. The raster files never become inadvertently detached from the master file, and the same commands are used for images as are used for vectors.

VersaCAD has the capacity of well over 100,00 objects. In fact, drawings with as many as 3,000,000 objects have been processed. Now this includes filled objects, including transparency. With the ability to insert a filled polygon or other object with constant color, VersaCAD is creating an even better way for 2D

designing.

Nesting symbols has never been so expansive. You can include reference files, image files and filled polygons. Printing is easier and better too. It has been enhanced to plot images and filled objects on any standard Windows Printer. Also automatic setup has been added to get the maximum utility out of your existing printers. You can also print a single drawing or create batch prints.



Bill DuBourdieu's 2D drawing in VersaCAD with 3D image of plan inserted into the actual drawing.

The best of these features is, of course, the ability to insert an image into a drawing. All users will benefit from being able to use an image, from a company logo on the title block of their drawings, to adding a photograph to their line drawing (see center). Using this feature along with VersaCAD's newest feature,

Priority, will allow users to place the drawing on top of a photo or vice versa. Priority works with all objects thus giving users control of the order of how objects draw and print.

Here are a few specific applications of the use of photos or images for various disciplines:

- Architects can add a rendering of a project where the rendering is taken from SketchUp, Rhino, or really any 3D modeling and rendering software. Or they can add a photograph of the site where a building will be built, scan a really old paper drawing and scale the resultant image to match real world coordinates and trace the image.
- For mechanical design there is the ability to include a photo of a prototype of the machine or rendering of a machine done in other software added to the VersaCAD produced technical drawing. You can create as-built by photographing the existing plant, scanning and then using it as a guide.

It can also be used for mapping to add, scale and modify images of photogrammetry. GIS users can map the habitat of endangered species. A photo of existing electrical schematics or PCB can be added and changes drawn. Stores can use a photo of the building for layout and interior design. And even more, making this the best release yet.

Archway Meets Governor Schwarzenegger

In August, Archway was greeted by Governor Schwarzenegger at the California Construction Expo in Pasadena, CA. As pictured at right, Tom Lazear of Archway spoke with and explained to the Governor about the benefits of CAD in this economy. The Governor then shook Lazear's hand and told him to keep up the good work.



This conference was just one of five "established by the Governor's Executive Order S-02-06 which called for new ways to connect small business with contracting opportunities and certification information" according to the Governor's [website](#). It was a great way to discuss with not only the Governor but other small businesses, the important issues facing today's industry.

Archway's Product Line

Archway is a full service provider of technical software serving the Academic, Architectural, Civil and Mechanical Engineering markets.

DESIGN & ENGINEERING SOFTWARE:

- MicroStation, ProjectWise and applications
- VersaCAD Win & Mac
- Bentley Architecture & Generative Components
- InRoads, PowerCivil & Geopak Civil Software
- Haestad Hydraulic Analysis Software
- Hevacomp & Tas Software
- Solid Edge and applications
- Promis*e

3D GRAPHICS & ANIMATION SOFTWARE:

- Rhino 3D, Flamingo, Penguin & Bongo
- Bentley ProjectWise Navigator
- ArchVision libraries

COMPUTER PERIPHERALS:

- Z Corp 3D Printers

SERVICES:

- Training
- Phone support
- On-site support
- 3D Printing
- Customizing
- Consulting
- Contract software development
- CAD file translation

MyCADvideos.com

Checkout this site for free introductory videos and one hour webinars on the latest in CAD, FEM, and more.

ZPrinters

New 3D printing products from Z Corp are transforming how schools, architects, designers and engineers are creating their 3D models. Offering full HD color and pure white models that only need water to cure, Z Corp is turning the 3D printing world upside down. There has never been a better time to purchase a new Z Corp Printer. If you need information, would like us to create a 3D model for you, or would like to purchase a new Z Corp Printer, please give us a call.

PRODUCTS

ZPrinter[®]450

World's Most Automated and Affordable Color 3D Printer



\$39,900*

* Manufacturer's Suggested U.S. List Price for Printer only. Options, shipping, local taxes and duties not included.