

Archway Systems, Inc.
714 374-0440 phone
714 374-0441 fax
tom@archwaysystems.com

Central California:
PO Box 382
Prather CA 93651-0382

Northern California
56 Nicholl Ave
Point Richmond CA 94801
510 231 0502
gmcmeans@egs-inc.com

www.archwaysystems.com
www.versacad.com

Versa CAD

Versatile Computer Aided Design

Volume 8

Mar 2007

Number 1

Lost VersaCAD users found!

Nearly every day a long-time VersaCAD user comes back to VersaCAD. In 2006, 426 VersaCAD users received their first Windows or Mac OS X upgrade. Super to hear how well they are doing and how well VersaCAD has served them over the years. For example, John Novak, a mechanical designer in Butler PA has expensive 3D software but still likes his VersaCAD for layout. He says, "I can do layouts for laser cutting so much faster with VersaCAD". He updated his old DOS software to the latest Windows. Robert Clawson used VersaCAD as part of his facility design work in Las Vegas. Recently retired and bought his own VersaCAD for his work. Gary Miller, expert parking designer received his Windows update and has already written a new application for parking lot design and parking structure design. Howard Gledhill at Jarecki Valves is another. Many have used VersaCAD productively in their business for over 20 years.

VersaCAD reviewed in Machine Design

In case you missed it, there is a great review of VersaCAD in the June 2006 issue of the prestigious Machine Design magazine: Just go to www.versacad.com VersaCAD is the best kept secret in the industry, but, the word is getting out. Designing with CAD doesn't have to be expensive or difficult.

Special solidThinking price for VersaCAD users

If you took advantage of the specials offered for solidThinking FORMA last year, you can upgrade to the latest and greatest for some very special pricing. Here is a sample:

Your old FORMA to v7.5 Modeler \$395 vs. usual \$695
Your old FORMA to v7.5 Modeler XL \$595 vs \$1495
Your old FORMA to v7.5 Design \$795 vs. \$1495

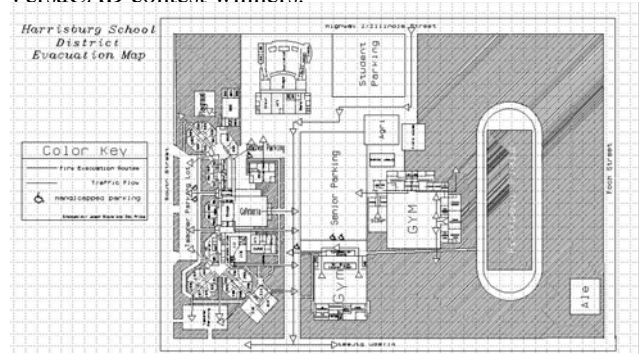
Read up on the product differences:
www.solidthinking.com

Rhino 3D v4.0 Ships

Rhino 4.0 is shipping with over 800 improvements. Checkout www.rhino3d.com for all the new features. Upgrades from v3.0, which will be priced at \$395, are available at only \$295 from now until June 2007. New price for single commercial seat is \$995. Educational Classroom License is still just \$975 with classroom license upgrades available at \$295

EAST 2007 Contest Winner

Archway supported the annual EAST (Environmental and Spatial Technology) conference in Hot Springs AR attended by over 1500 people. Great to see what these kids can do. Over 150 booths staffed by high school and middle school students from all over the country. Jason Blake and Zac Price of Harrisburg (AR) High School were the VersaCAD contest winners.



Harrisburg
Evacuation Map
drawn by Jason
Blake and Zac Price
using VersaCAD for
Windows 2006. First
Prize in EAST 2007
contest.

Inside...

Who's who at Archway Systems.....	2
Report: VersaCAD and 3D Revisited..	2
Training Class Schedule	3
VersaCAD 2007 for Windows.....	3
CAD Survey course.....	3
Instructor-led online courses.....	3
VersaCAD Applications Update.....	3
CAD Education Update.....	3
VersaCAD/Parking Structure.....	4

Who's who at Archway Systems

Arlene Black	Sales
Tom Lazear	Admin, Sales and training
George McMeans	Sales & training in Nor. Cal.
Mike Lazear	Programming & support
Sandy Lazear	Accounting
Paul Barr	Programming

Erik Wordal	Training in Cal coastal
Rick Plummer	Mftr consultant and sales
Greg Crossley	Central Calif office
Josh Lazear	Webmaster & Programming
Dan Lazear	Administration
Greg Hamano	Support & Training
Leah Spitler	Haestad Support & Training

REPORT VersaCAD and 3D Revisited

Users tell us that VersaCAD is an outstanding product for layout, design and drafting. Call it 2D or 2.5D, really doesn't matter, VersaCAD is a tool for making great designs such as award winning roller brakes, macadamia nut processing plants, elevators, store layout, buildings, schematics or maps. So, what about this 3D stuff? Is it really necessary or just a toy? More and more, 3D is becoming an important part of the design process whether machine design, plant design, building design, or civil design. Does that mean the need for 2D is over? No. There will always be projects for which a good, flexible, versatile 2D CAD package has application. That is where VersaCAD comes in.

But, what about 3D? Which are the really good 3D packages and which are most interoperable with VersaCAD. The answers depend on the discipline you are working with, what you want to achieve and, most importantly, what your customer wants. Lets look at a few examples:

Let's say you are an **architect** and your customer wants you to help with a conceptual study that will involve 3D massing models of a new development. No question, the product to use would be SketchUp. There is a free version that will do the job and your customer can use the free software and you can too. Easy to learn, easy to use, and it is FREE.

On the other hand, suppose your customer wants not only a massing model, but, they want you to do buildable 3D design models from which you can automatically pull off drawings, STL files for 3D printing, schedules and the like. Now called BIM (building information modeling) Then, forget SketchUp, it is going to get you in trouble. Not to say you couldn't start with SketchUp and then switch to some other product, but, don't count on SketchUp sticking with you through the whole project. You are better off to spend some money for a more comprehensive software to save you time and frustration later. The short list of BIM 3D includes: Bentley Architecture, Autodesk Revit, Archicad, and maybe one or two products from outside the U.S. No problem in moving drawings cut from these models to VersaCAD via DXF or DWG as they all include that format. And, you can move 2D geometry from a VersaCAD layout up to any of these 3D. We believe Bentley's product is the best, and that is why we represent the product. Reason: Best 3D platform, no internal data translation, best reference file for coordinating disciplines, most disciplines covered, most scalable, generative components. DWG/DXF to/from VersaCAD works great.

Or, suppose your work is **mechanical design**. Now, there are lots of subcategories, say by product designed: toys, autos, refrigerators, tools, spare parts or airplanes. Nearly every mechanical 3D works fine with VersaCAD: Rhino 3D or solidThinking for surface-oriented products, Solid Edge or Solid Works for assemblies of parts (John Novak just told me that he uses Solid Works all the time. But, he updated his VersaCAD because it is so much faster for layout of laser cut parts).

Or, how about **civil design**. Well, here you have two major categories: site design and corridor design. Autodesk is pushing their Civil3D (a combination of their old LDD and CAiCE, the product they purchased and dropped) Looks pretty but lacks fundamentals such as weak on surveying side. Bentley offers Geopak, InRoads and PowerCivil. PowerCivil is best for smaller companies that do site design. InRoads or Geopak are best for corridor design. Just see what your state DOT uses, and go with that. Life will be much simpler and orderly if you use what the DOT uses since that is the top of the food chain. VersaCAD actually runs good with all of them. By the way, some still believe VersaCAD is best for civil layout or maps because of its accurate database, bearing-distance coordinates, ease of use, etc. If you are doing 3d terrain models, use a 3D.

If you design very specific, repetitive things, you can probably afford a **custom system designed specifically for your work**. A good example is VersaCAD/Parking Structure. Here is 3D software developed in VersaCAD CPL that runs as an integral part of VersaCAD. It comes all setup to design a particular 3 bay 5 story parking structure. But, you can edit any group of the 119 pieces of data and it will completely design, detail, & draw a suitable, near optimal parking structure. All you have to do is print out the several cross sections, elevations and floor plans plus quantity takeoff and deliver to your customer. Saves hundreds of man-hours and shortens project schedules. The price: \$2995. Or, as another example, suppose you want custom software to design just as specific, but, the software doesn't currently exist. Well, you can pay a software house to design software specifically to your needs. Might cost a lot upfront, but then you would have a real competitive advantage over your competition. Archway has recently completed a project for a custom software to detail steel studs for residential projects. The software automatically details each stud for a wall, adjusts for doors and windows, and outputs instructions to the machine that makes the studs including end crimps, utility holes and mark numbers. Software that enables revolutionary productivity.

If you would like to see some short demos of some of the above 3D products, we invite you to go to www.mycadvideos.com This is a new site and we will be putting more videos on the site, so check it out and stay tuned.

Bottom line, many jobs can be done with standard VersaCAD. But, when the project needs 3D, make sure you get the right tool for the job. Send us an email with your 3D requirements and we will steer you in the right direction.

Training Class Schedule

Archway offers a variety of training classes using the latest of each software. Classes are 1 to 4 days in duration and cover subjects in depth using certified materials. All classes are 8:30 am to 5 pm. Locations: Huntington Beach training center (**HB**) and S.F. Bay area (**BA**). Classes can be delivered on-site and online. For latest Bentley courses, see also: <http://www.bentley.com/en-us/training/>

Upcoming classes:

VersaCAD/solidThinking Quickstart- Learn VersaCAD basics plus new translator and Library manager. Then, learn how to move files to solidThinking and create 3D models. Two-day class, \$495 HB. TBA

VersaCAD 2006 Windows update- Covers all the changes in VersaCAD 2003 thru 2006. One-day class includes workbook, lunch and computer to use. Cost is \$245. Classes available on demand.

VersaCAD 2005 for Mac OSX Update Covers all changes since VersaCAD 2001 plus review of some features. One-day class includes workbook, lunch and use of computer. Cost is \$245. Classes available on demand.

InRoads Road Design Basics - This is a Bentley certified, 3-day class using Bentley's InRoads 8.5 training manual. Cost is \$1350 including course book and instruction. Apr 3-5

Rhino 4.0 Level I . A thorough, 3 day course in using Rhino to create and edit NURBs based 3D models. Fee is \$695. HB Mar 6-8

Essential MicroStation . A thorough, 4 day course in MicroStation 2D. Fee is \$1400. HB Apr 10-13

Solid Edge Basics - The goal of this 4 day course making the student ready for productive work with an introduction to Part, Assembly, Draft and Sheet Metal modules of Solid Edge. At \$1200 this is a very cost-effective and quick way to get started in Solid Edge.

VersaCAD 2007 for Windows.

The project continues. VersaCAD may become the first CAD software ever to use XML as its working storage. That means the file would be completely interoperable and readable giving the maximum assurance of future preservation of data. The new database will also provide unlimited restrictions expanding VersaCAD utility. The first application may be an improved bill of material along with upgrade of the VersaCAD translator. This is a huge project so will take some time.

On-Line Instructor-Lead Courses

If you have Internet access, you can receive a one on one VersaCAD course to suit your own company's specific needs. For example, you might want to learn how PDF is integrated with VersaCAD Mac or maybe you haven't yet incorporated VersaCAD Explorer in your VersaCAD Windows implementation. Or, you have a specific design need and you want to know how to do it. You can get help from the experts here at Archway over the Internet. You will see our computer and we see yours. Rates as low as \$80 per hour for one-on-one consulting/training. Give us a call if we can help.

VersaCAD Applications Update

VersaCAD 2006 for Windows is an excellent platform for developing special-purpose design applications. Here are two of the applications that are available:

Parking Lot Design. Automatically design a parking lot. Just key-in the relevant parameters and VersaCAD does the rest producing complete working drawings for straight or slanted parking spaces with or without planters. Cost is regular VersaCAD plus \$195

Parking Structure Design. You have to see this one to believe it. Key-in all the relevant code data and then watch VersaCAD automatically draw the floor plans, four elevations, cross sections and material takeoff for up to 5 story 3 bay parking structures. Truly amazing productivity. Priced at \$2995, includes the application, VersaCAD and a year of Premium Service.

Custom applications. Archway offers customizing of VersaCAD to suit particular applications.

CAD Education: Status Report

VersaCAD has long been a favorite of educators because of its logical structure and short learning curve. Students learn more concepts in a class with VersaCAD because they are not encumbered with complicated procedures. Not to mention the low cost of \$995 for an unlimited campus license including free student copies, course material and support. Currently, over 1100 schools incorporate VersaCAD in their CAD technology program. A few examples:

University of Arizona.	Civil Engineering.	VersaCAD Mac
MIT	Research center	VersaCAD Mac
LSU		VersaCAD Mac
E. Kentucky Univ	Facility Design class	VersaCAD Win
E. Illinois Univ	Facility Design class	VersaCAD Win
Over 200 EAST high schools		VersaCAD Win
Holland Christian HS		VersaCAD Win
Several Iowa AEAs		VersaCAD Win
And more.		

CAD Survey Course

Amazing what is available now for low budget teaching of CAD. Archway offers two versions of its CAD Survey course, one that is free and one that is low cost:

The free one includes use of VersaCAD 2002 for Windows downloadable from www.sagamorepub.com plus the free Rhino 25 save version plus the free SketchUp plus free MicroStation Powerdraft downloadable from

www.becareers.com If you download the software and send us an email, we will send you the 200 page course material that integrates the teaching of those software. The student is introduced to 2D, 3D, mechanical, architectural, product design and other applications. Designed as a fast paced semester course. If the school has some budget, the latest version of VersaCAD is available as an upgrade at \$595, Rhino 3D v4.0 lab license available at \$975, and full MicroStation and applications for \$200 per seat per year.

ARCHWAY'S PRODUCT LINE

Archway is a full service provider of technical software and hardware serving the Academic, Architectural, Civil and Mechanical Engineering markets.

CAD SOFTWARE:

- VersaCAD Win & Mac
- InRoads & Geopak Civil Software
- Solid Edge
- MicroStation and applications
- Plassotech finite element modeling
- TransMagic-translation software
- Magics X STL editing software

3D GRAPHICS & ANIMATION SOFTWARE:

- Rhino 3D, Flamingo, Penguin & Bongo
- Softimage
- solidThinking
- Bentley Navigator
- ArchVision libraries

COMPUTER PERIPHERALS

- Z Corp 3D Printers
- Projectors

SERVICES

- Training
- Phone support
- On-site support
- 3D Printing
- Customizing
- Consulting
- Contract software development
- CAD file translation

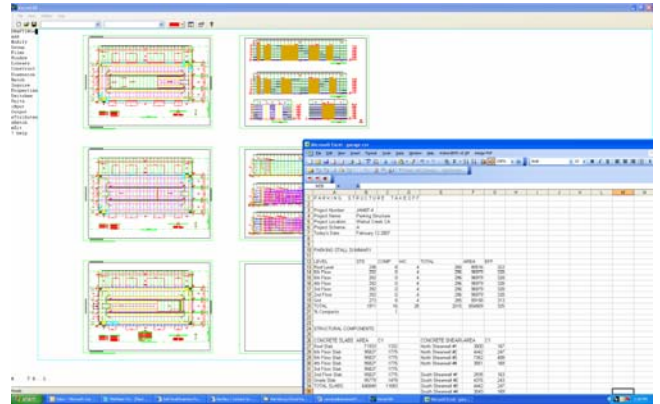
Tom Lazear
Archway Systems, Inc.
2134 Main Street #160
Huntington Beach CA 92648

Archway Offers Projectors Again

Archway offered BENQ projectors for some time and then dropped the line. Recently, BENQ came out with a new program and Archway is reauthorized, so if you have any need for a computer projector or electronic whiteboard, give us a call. Some examples: RavenXB DLP 2000 lumens SVGA just \$749. Or, Beacon LCD 2200 lumens SVGA for \$799. EBEAM System 3 for whiteboard applications only \$750. Uses your regular whiteboard. Lots more.

VersaCAD/Parking Structure

This is an example of the best customization of VersaCAD. Takes data required for design of a parking structure and then automatically produces the elevations, cross sections and plan drawings PLUS the takeoff of material. Great for preliminary or final design and estimating. Turns hours into seconds.



PRESORTED STD
U.S.POSTAGE
PAID
Santa Ana, CA
Mini-Mailers